



India Meteorological Department

(Ministry of Earth Sciences)

NATIONAL BULLETIN NO.: 02 (BOB/04/2023)

TIME OF ISSUE: 1210 HOURS IST

DATED: 08.09.2024

FROM: INDIA METEOROLOGICAL DEPARTMENT (FAX NO. 24643965/24699216/24623220)
TO: CONTROL ROOM, NDM, MINISTRY OF HOME AFFAIRS (FAX.NO. 23093750)
CONTROL ROOM NDMA (FAX.NO. 26701729)
CABINET SECRETARIAT (FAX.NO.23012284, 23018638)
PS TO HON'BLE MINISTER FOR S & T AND EARTH SCIENCES (FAX NO.23316745)
SECRETARY, MOES (FAX NO. 24629777)
H.Q. (INTEGRATED DEFENCE STAFF AND CDS) (FAX NO. 23005137/23005147)
DIRECTOR GENERAL, DOORDARSHAN (23385843)
DIRECTOR GENERAL, AIR (23421105, 23421219)
PIB MOES (FAX NO. 23389042)
UNI (FAX NO. 23355841)
D.G. NATIONAL DISASTER RESPONSE FORCE (NDRF) (FAX NO. 26105912, 2436 3260)
DIRECTOR, PUNCTUALITY, INDIAN RAILWAYS (FAX NO. 23388503)
CHIEF SECRETARY, WEST BENGAL (FAX NO. 033-22144328)
CHIEF SECRETARY, ODISHA (FAX NO. 0674-2536660)
CHIEF SECRETARY, ANDHRA PRADESH (FAX NO. 0863-2441029, 08645-246600)
CHIEF SECRETARY, JHARKHAND (FAX NO. 0651-2400255)
CHIEF SECRETARY, CHHATTISGARH (FAX NO. 0771-2221206)
CHIEF SECRETARY, TELANGANA (FAX NO. 040-23453700)
ADMINISTRATOR, ANDAMAN & NICOBAR ISLANDS (FAX NO. 03192- 232656)

Sub: Depression over westcentral and adjoining northwest Bay of Bengal

The depression over westcentral and adjoining northwest Bay of Bengal moved north-northwestwards with a speed of 13 kmph during past 3 hours and lay centered at 0830 hours IST of today, the 8th September, 2024 over the same region near latitude 18.2°N and longitude 86.8°E, about 280 km east of Kalingapatnam (Andhra Pradesh), 230 km east-southeast of Gopalpur(Odisha), 260 km south-southeast of Paradip (Odisha) and 390 km south of Digha (West Bengal).

It is very likely to move nearly northwards towards north Odisha-West Bengal coasts and intensify into a deep depression during next 24 hours. Thereafter, it is very likely to move west-northwestwards and cross Odisha and adjoining West Bengal coasts between Puri and Digha around evening/night of 9th September. Continuing to move further west-northwestwards, it is likely to move across Odisha & adjoining Gangetic West Bengal and Jharkhand & adjoining north Chhattisgarh during subsequent 2 days.

Warnings:

(i) Rainfall warning

Coastal Andhra Pradesh & Yanam: Light to moderate rainfall at most places is very likely with heavy to very heavy rainfall at a few places and extremely heavy rainfall at isolated places on 08th and 9th and heavy rainfall on 10th September.

Odisha: Light to moderate rainfall at most places is very likely with heavy to very heavy rainfall at a isolated places on 08th, heavy to very heavy rainfall at a few places and extremely heavy rainfall at isolated places over south Odisha on 9th; heavy to very heavy rainfall on 10th and heavy rainfall on 11th September.

Spatial rainfall distribution: Isolated: <25%, A few: 26-50%, Many: 51-75%, Most: 76-100%

Rainfall amount (mm): Heavy rain: 64.5 – 115.5, Very heavy rain: 115.6 – 204.4, Extremely heavy rain: 204.5 or more.

Telangana: Light to moderate rainfall at many places is likely with heavy to very heavy rainfall at isolated places very likely on 08th & 9th; heavy rainfall on 10th September.

Chhattisgarh: Light to moderate rainfall at most places is likely with heavy to very heavy rainfall at isolated places during 08th-10th and heavy rainfall on 11th September.

Gangetic West Bengal: Light to moderate rainfall at most places with heavy to very heavy rainfall at isolated places very likely during 9th & 10th and heavy rainfall at isolated places 12th September.

Jharkhand: light to moderate rainfall at most places is very likely with heavy rainfall at isolated places on 9th; heavy to very heavy rainfall during 10th-11th and heavy rainfall on 12th September.

(ii) Wind warning

Squally weather with wind speed reaching 45-55 kmph gusting to 65 kmph is currently prevailing over Northwest and adjoining Northeast & Central Bay of Bengal and along & off Andhra Pradesh-Odisha-West Bengal and adjoining Bangladesh coasts. It is likely to increase becoming 50-60 kmph gusting to 70 kmph over the same region from night of today, the 8th September till morning of 10th September and decrease gradually thereafter.

Squally weather with wind speed reaching 45-55 kmph gusting to 65 kmph is likely to prevail over coastal districts of Odisha and Gangetic West Bengal on 9th and 40-50 kmph gusting to 60 kmph over interior districts of north Odisha and adjoining districts of Jharkhand and north Chhattisgarh on 10th September and decrease gradually thereafter.

(iv) Sea Condition: Rough to very rough sea condition over Northwest and adjoining Northeast & Central Bay of Bengal and along & off Andhra Pradesh-Odisha-West Bengal and adjoining Bangladesh coasts from today, the 8th September till morning of 10th and rough sea condition on 11th September.

(v) Fishermen Warning

Fishermen are advised not to venture into Northwest and adjoining Northeast & Central Bay of Bengal; along & off Andhra Pradesh-Odisha-West Bengal and adjoining Bangladesh coasts till forenoon of 11th September.

(vi) Flash Flood Guidance: (Graphics Attached)

24 hours Outlook for the Flash Flood Risk (FFR) till 0530 IST of 09-09-2024 :

Low to Moderate flash flood risk is likely over few watersheds & neighbourhoods of following Met Sub-divisions during next 24 hours.

Odisha - Baragarh, Bauda, Ganjam, Jagatsinghapur, Kalahandi, Kandhamal, Kendraparha, Khordha, Koraput, Nayagarh, Puri and Rayagarha districts.

Surface runoff/ Inundation may occur at some fully saturated soils & low-lying areas over Area of Concern as shown in map due to expected rainfall occurrence in next 24 hours.

(vii) Impact Expected (coastal Andhra Pradesh, Odisha, Chhattisgarh, Telangana, Jharkhand and West Bengal due to heavy Rainfall and squally wind)

- ✓ Localized Flooding of roads, water logging in low lying areas and closure of underpasses mainly in urban areas of the above region.
- ✓ Occasional reduction in visibility due to heavy rainfall.
- ✓ Reduction of visibility over sea area due to sea spray induced by strong wind and heavy rainfall.
- ✓ Disruption of traffic in major cities due to water logging in roads leading to increased travel time.
- ✓ Minor damage to kutcha roads.
- ✓ Possibilities of damage to vulnerable structure.
- ✓ Localized Landslides/Mudslides/landslips/mud slips/land sinks/mud sinks.
- ✓ Damage to horticulture and standing crops in some areas due to inundation.
- ✓ It may lead to riverine flooding in some river catchments (for riverine flooding please visit Web page of CWC)
- ✓ Uprooting of small trees and breaking of tree branches along coastal districts of North Odisha & adjoining West Bengal.

(viii) Action Suggested (coastal Andhra Pradesh, Odisha, Chhattisgarh, Telangana, Jharkhand and West Bengal due to heavy Rainfall)

- ✓ Fishermen are advised not to venture into Northwest and adjoining Northeast & Central Bay of

Spatial rainfall distribution: Isolated: <25%, A few: 26-50%, Many: 51-75%, Most: 76-100%

Rainfall amount (mm): Heavy rain: 64.5 – 115.5, Very heavy rain: 115.6 – 204.4, Extremely heavy rain: 204.5 or more.

Bengal; along & off Andhra Pradesh-Odisha-West Bengal and adjoining Bangladesh coasts till forenoon of 11th September.

- ✓ Judicious regulation of offshore/onshore Operations
- ✓ Judicious regulation of surface transports including railways and roadways.
- ✓ Check for traffic congestion on your route before leaving for your destination.
- ✓ Follow any traffic advisories that are issued in this regard.
- ✓ Avoid going to areas that face the water logging problems often.
- ✓ Avoid staying in vulnerable structure.

Agromet advisories for Heavy Rainfall likely over various parts of the country

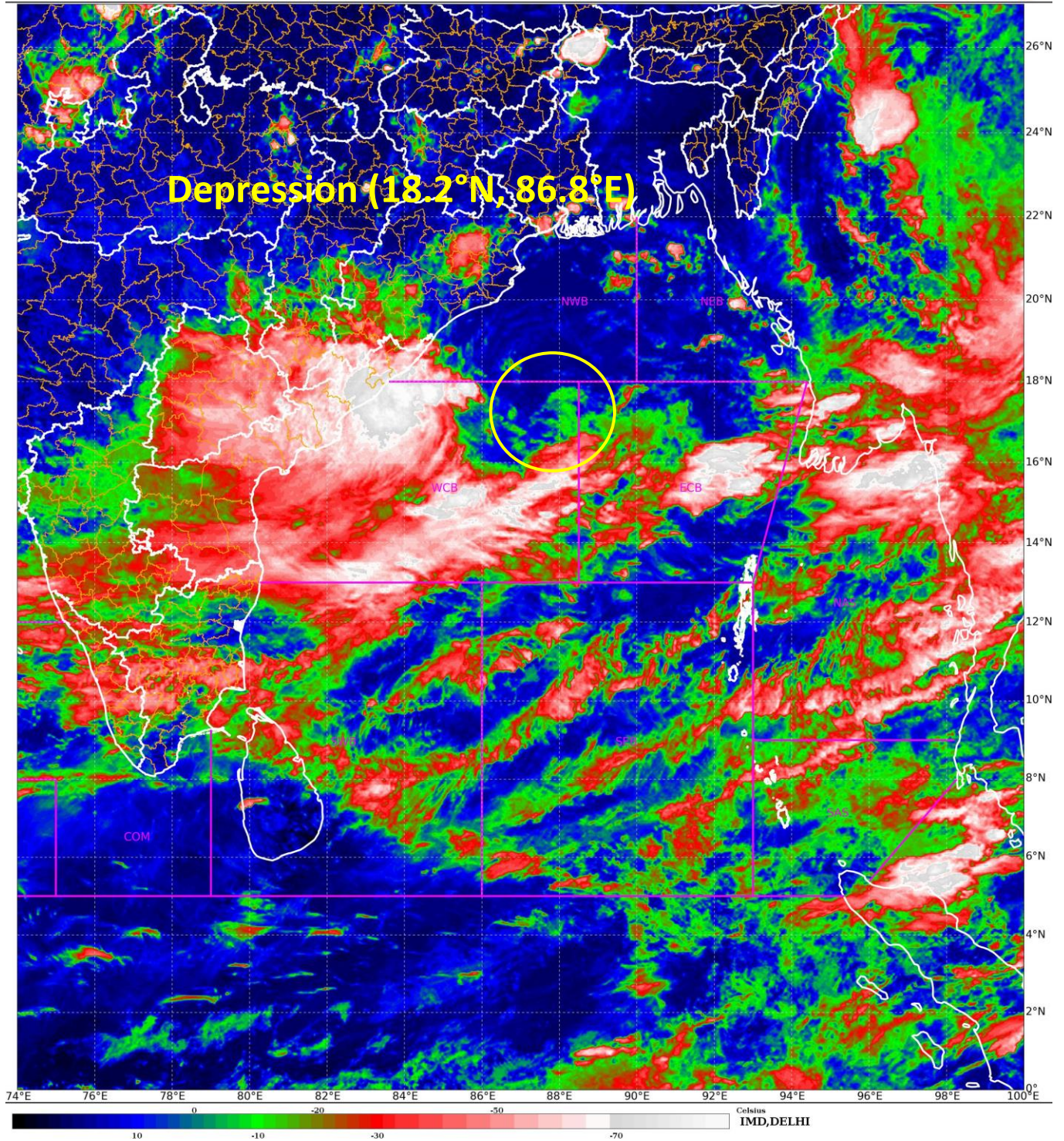
- ✓ Drain out excess water from rice, soybean, red gram, maize, cotton and turmeric in **Telangana**; from rice, finger millet, maize and groundnut in **Odisha** to prevent water logging.
- ✓ Postpone transplanting of rice in North Coastal **Andhra Pradesh**.
- ✓ Provide mechanical support to horticultural crops & staking to vegetables.
- ✓ Keep the harvested produce at safer place.

Significant rainfall recorded from 0830 hrs IST of yesterday, the 7th September to 0830 hrs IST of today, the 8th September, 2024 (in cm) is given in ANNEXURE-I.

The next bulletin will be issued at 1430hrs IST of today, the 8th September, 2024.

(Dr. Ananda Kumar Das)
Scientist- F, RSMC, New Delhi

Copy to: CRS, Pune/ACWC Kolkata/ACWC Chennai/CWC Bhubaneswar/CWC Visakhapatnam/MO Port Blair/MC Raipur/MC Ranchi/MC Hyderabad/MC Amaravati



Spatial rainfall distribution: Isolated: <25%, A few: 26-50%, Many: 51-75%, Most: 76-100%
Rainfall amount (mm): Heavy rain: 64.5 – 115.5, Very heavy rain: 115.6 – 204.4, Extremely heavy rain: 204.5 or more.



OBSERVED AND FORECAST TRACK OF DEPRESSION OVER WESTCENTRAL AND ADJOINING NORTHWEST BAY OF BENGAL BASED ON 0300 UTC (0830 IST) OF 8th SEPTEMBER, 2024.

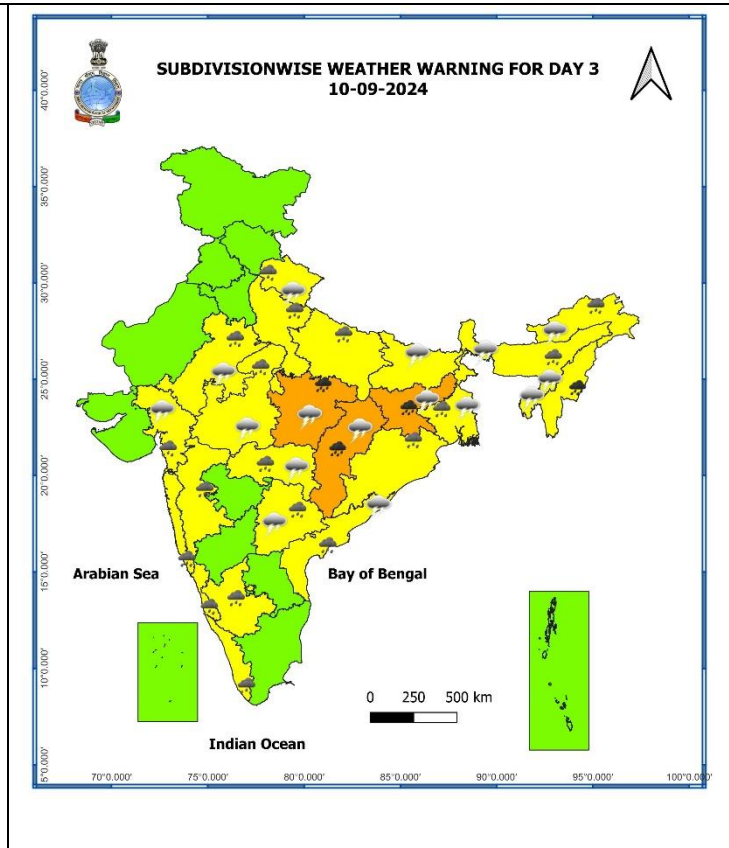
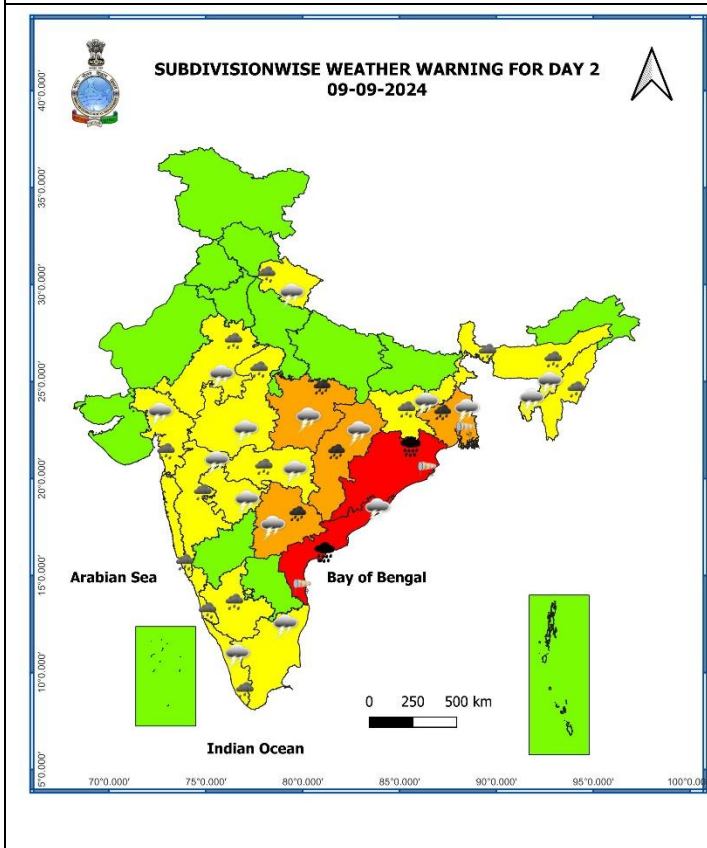
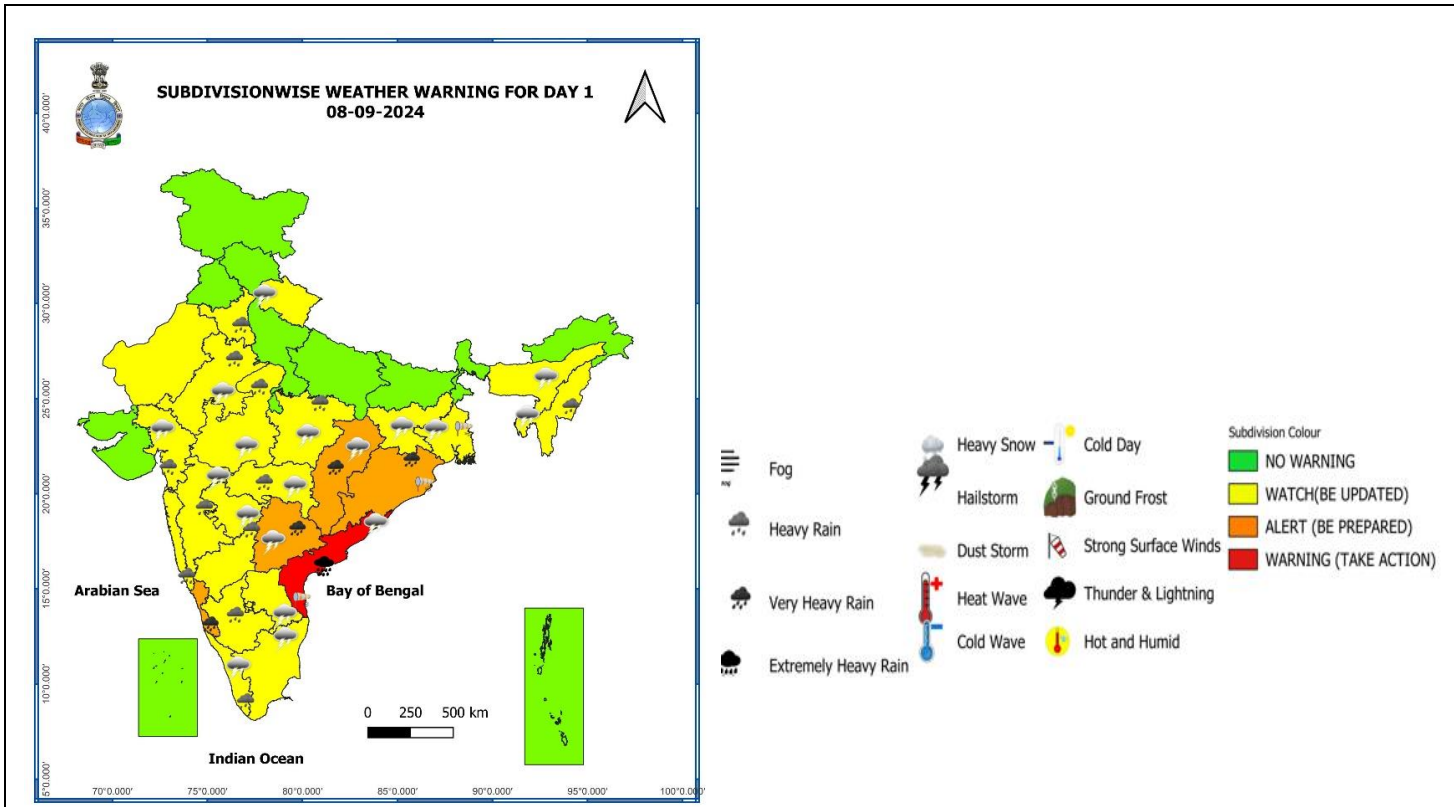


DATE/TIME IN UTC
 IST=UTC + 0530
 L: LOW PRESSURE AREA
 WML: WELL MARKED LOW PRESSURE AREA
 D: DEPRESSION (17-27 KT)
 DD: DEEP DEPRESSION (28-33 KT)
 CS: CYCLONIC STORM (34-47 KT)
 SCS: SEVERE CYCLONIC STORM (48-63KT)
 VSCS: VERY SEVERE CYCLONIC STORM (64-89 KT)
 ESCS: EXTREMELY SEVERE CYCLONIC STORM (90-119 KT)
 SuCS: SUPER CYCLONIC STORM \geq 120 KT)

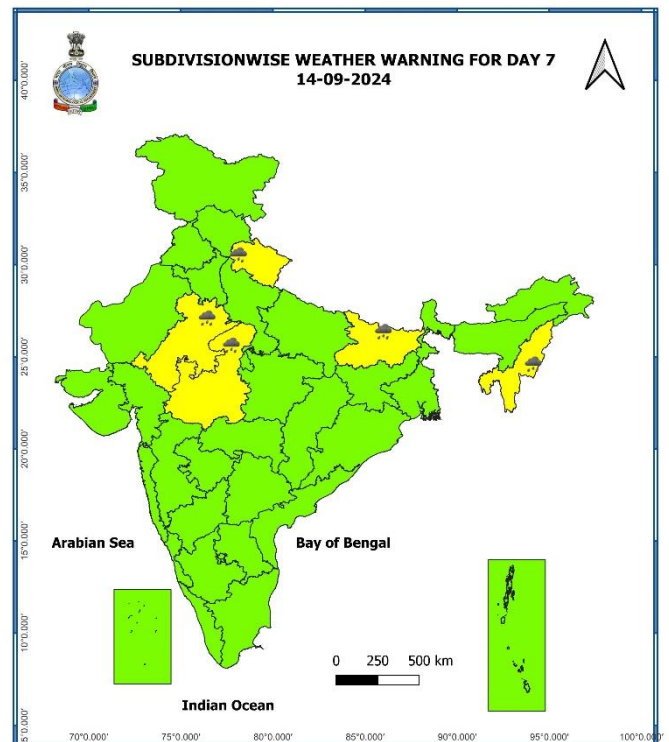
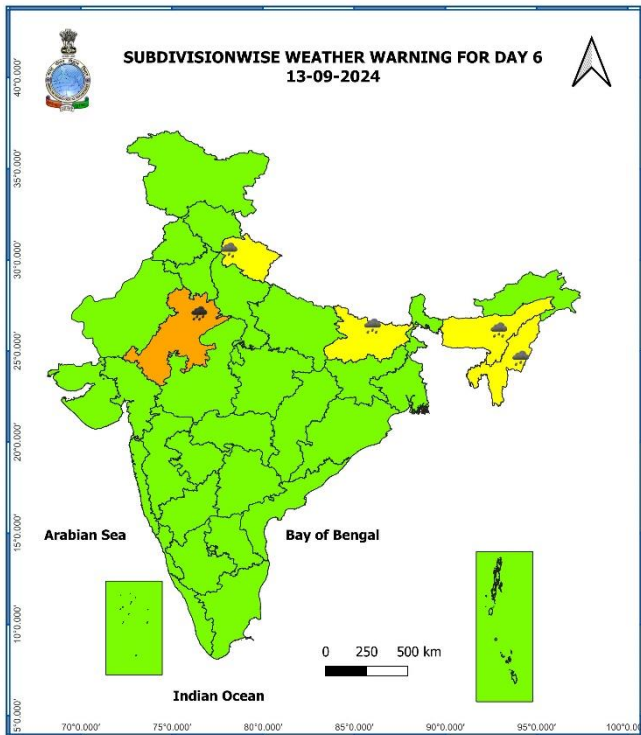
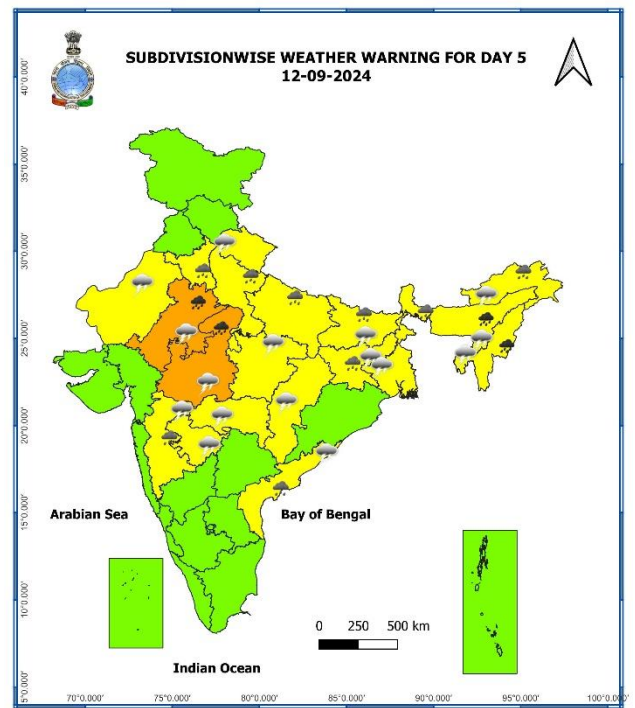
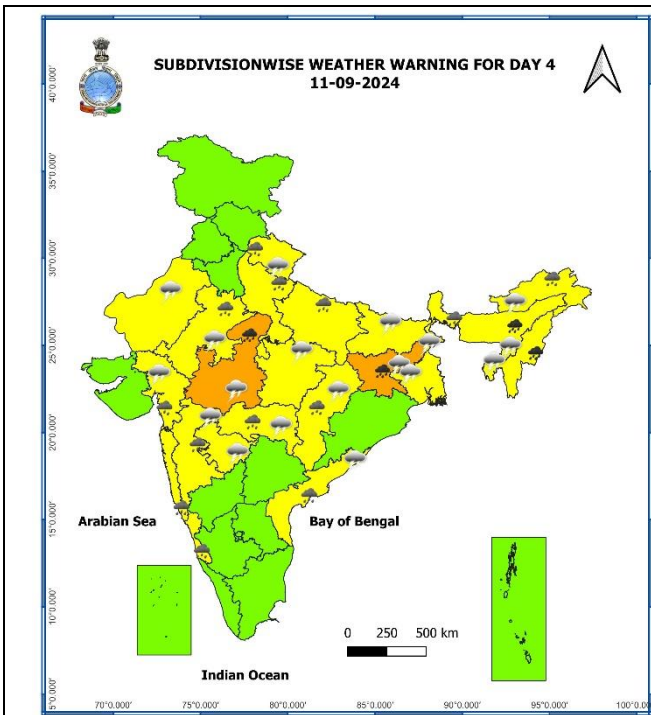
- LESS THAN 34 KT
- 34-47 KT
- \geq 48 KT
- OBSERVED TRACK
- FORECAST TRACK
- CONE OF UNCERTAINTY

Spatial rainfall distribution: Isolated: <25%, A few: 26-50%, Many: 51-75%, Most: 76-100%
 Rainfall amount (mm): Heavy rain: 64.5 – 115.5, Very heavy rain: 115.6 – 204.4, Extremely heavy rain: 204.5 or more.

Warning Graphics



Spatial rainfall distribution: Isolated: <25%, A few: 26-50%, Many: 51-75%, Most: 76-100%
Rainfall amount (mm): Heavy rain: 64.5 – 115.5, Very heavy rain: 115.6 – 204.4, Extremely heavy rain: 204.5 or more.



- Action may be taken based on **ORANGE AND RED** COLOUR warnings.
- Vulnerable regions likely urban and hilly areas action may be initiated for heavy rainfall warning.
- As the lead period increases forecast accuracy decreases.

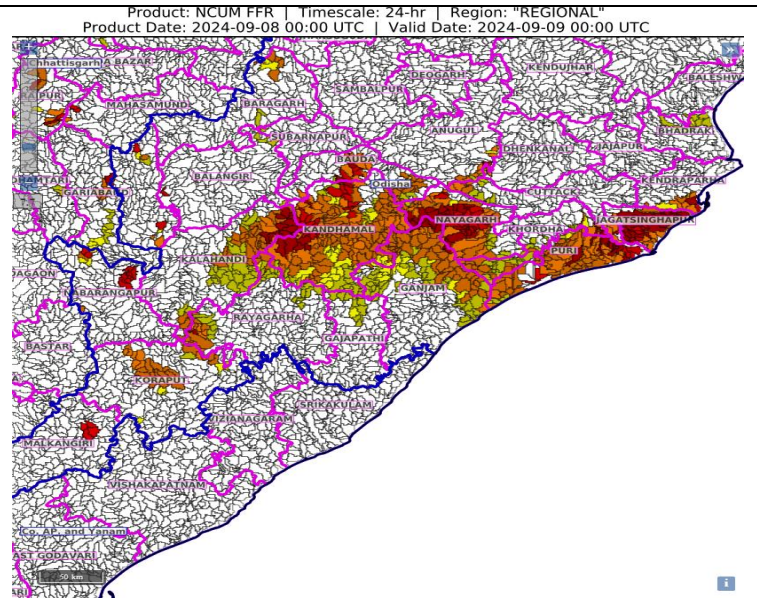
Spatial rainfall distribution: Isolated: <25%, A few: 26-50%, Many: 51-75%, Most: 76-100%
 Rainfall amount (mm): Heavy rain: 64.5 – 115.5, Very heavy rain: 115.6 – 204.4, Extremely heavy rain: 204.5 or more.

24 hours Outlook for the Flash Flood Risk (FFR) till 0530 IST of 09-09-2024

⋮
Low to Moderate flash flood risk likely over few watersheds & neighbourhoods of following Met Sub-divisions during next 24 hours.

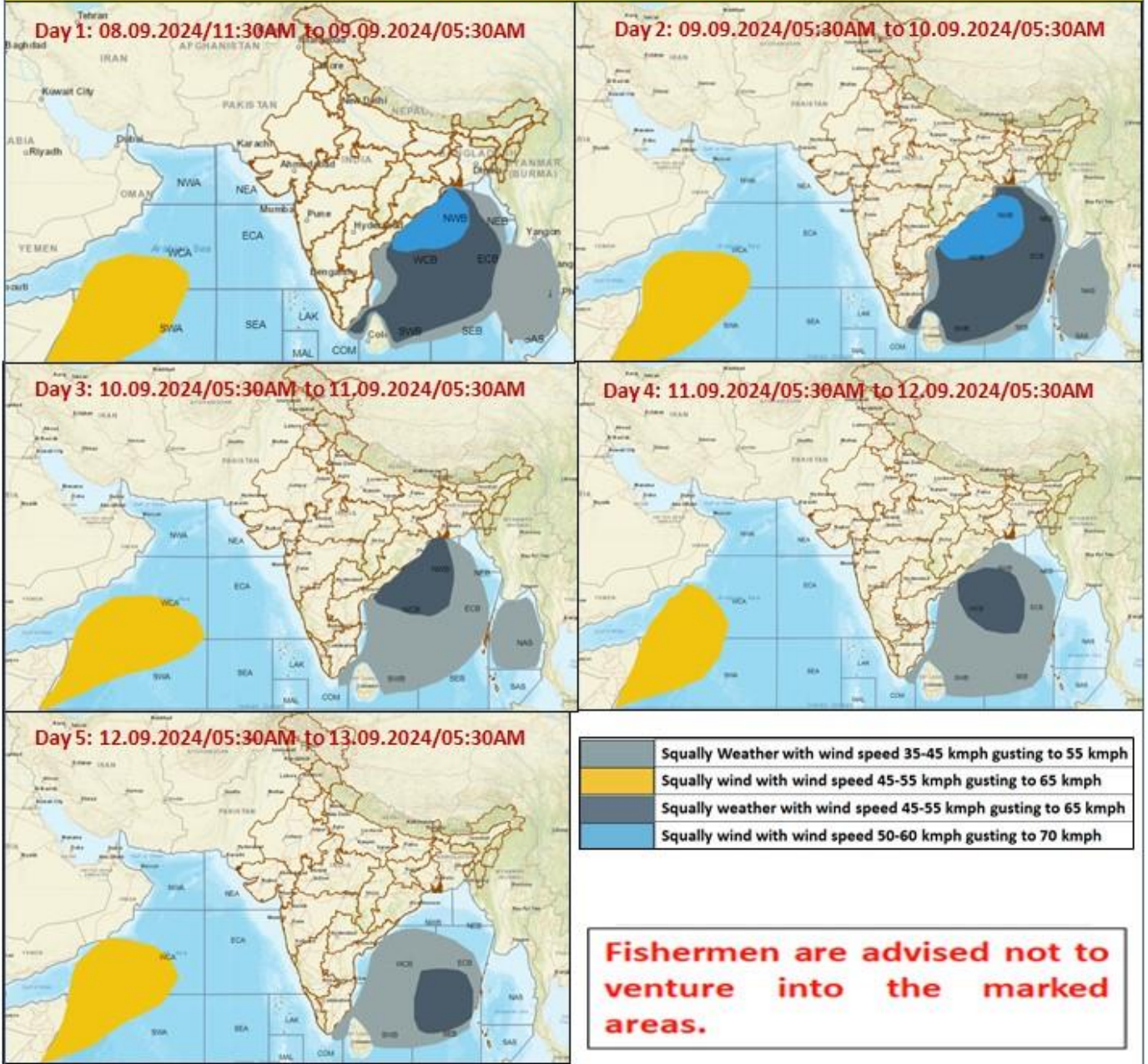
Odisha - Baragarh, Bauda, Ganjam, Jagatsinghapur, Kalahandi, Kandhamal, Kendraparha, Khordha, Koraput, Nayagarh, Puri and Rayagarha districts.

Surface runoff/ Inundation may occur at some fully saturated soils & low-lying areas over Area of Concern as shown in map due to expected rainfall occurrence in next 24 hours.



Spatial rainfall distribution: Isolated: <25%, A few: 26-50%, Many: 51-75%, Most: 76-100%
Rainfall amount (mm): Heavy rain: 64.5 – 115.5, Very heavy rain: 115.6 – 204.4, Extremely heavy rain: 204.5 or more.

Fishermen Warning Graphics



Spatial rainfall distribution: Isolated: <25%, A few: 26-50%, Many: 51-75%, Most: 76-100%
 Rainfall amount (mm): Heavy rain: 64.5 – 115.5, Very heavy rain: 115.6 – 204.4, Extremely heavy rain: 204.5 or more.

Significant rainfall recorded from 0830 hrs IST of yesterday, the 7th September to 0830 hrs IST of today, the 8th September, 2024 (cm):

Coastal Andhra Pradesh & Yanam: Vizianagaram (dist Vizianagaram) 11, Tiruvuru (dist Ntr District) 10, Kalingapatnam (dist Srikakulam) 10, Nellimarla (dist Vizianagaram) 9, Denkada (dist Vizianagaram) 9, Bheemunipatnam (dist Vishakhapatnam) 9, Bondapalle (dist Vizianagaram) 8, Gajapathinagaram (dist Vizianagaram) 8, Gantyada (dist Vizianagaram) 7, Visakhapatnam (dist Vishakhapatnam) 7, Garividi (dist Vizianagaram) 7,

Odisha: Jeypore (Koraput) 12, Tihidi (Bhadrak) 9, Mundali (Cuttack) 7, Begunia (Khurda) 7, Madanpur Rampur (Kalahandi) 7, Borigumma (Koraput) 7,

Chhattisgarh: Belargaon (dist Dhamtari) 10, Bijapur (dist Bijapur) 7, Gangalur (dist Bijapur) 7,

Spatial rainfall distribution: Isolated: <25%, A few: 26-50%, Many: 51-75%, Most: 76-100%

Rainfall amount (mm): Heavy rain: 64.5 – 115.5, Very heavy rain: 115.6 – 204.4, Extremely heavy rain: 204.5 or more.